

# Rafael Coronel

---

Lee Drake  
Mexico City, May 8th, 2015





3

10

6

2

5

11

12

1

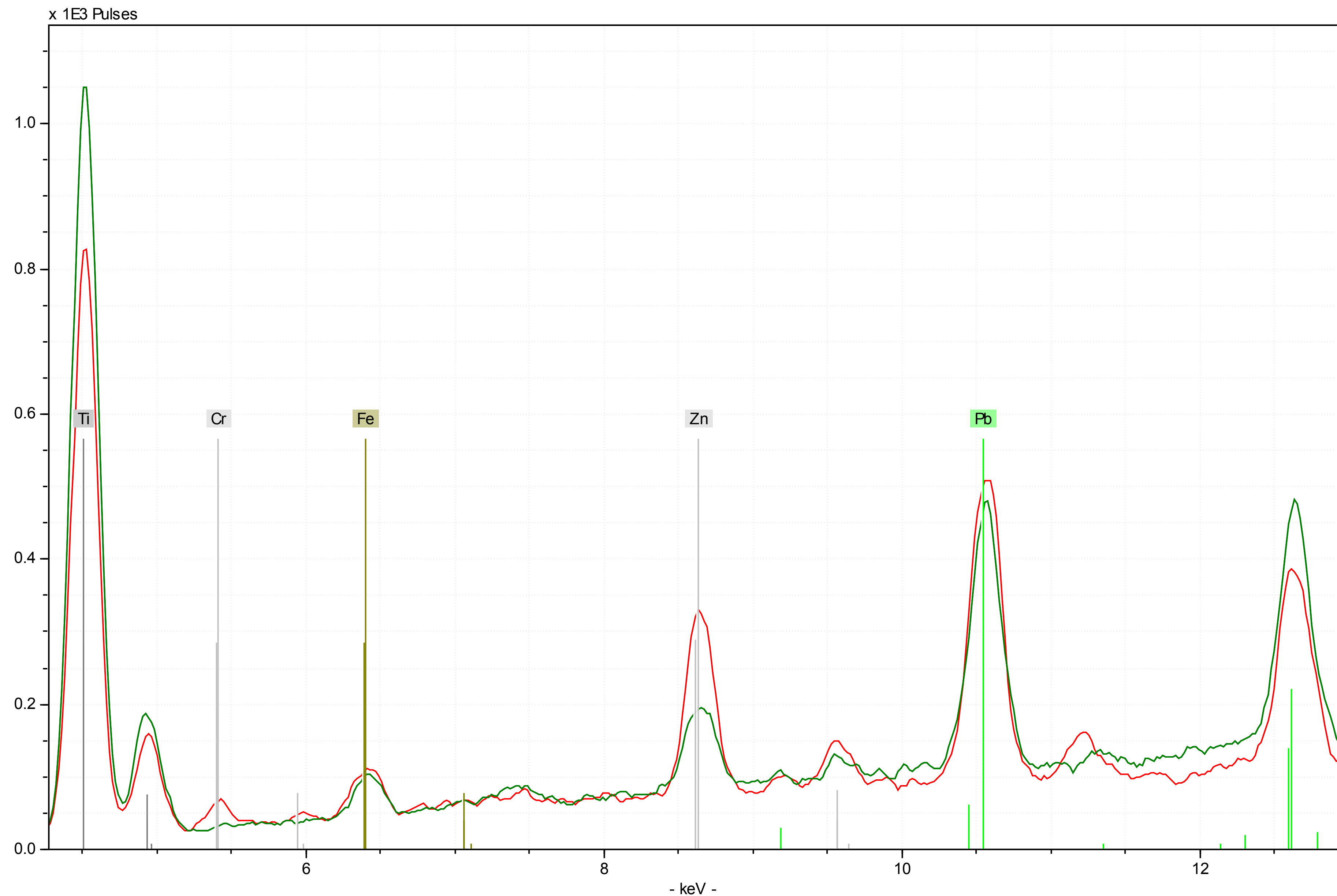
7



8

9

4

13

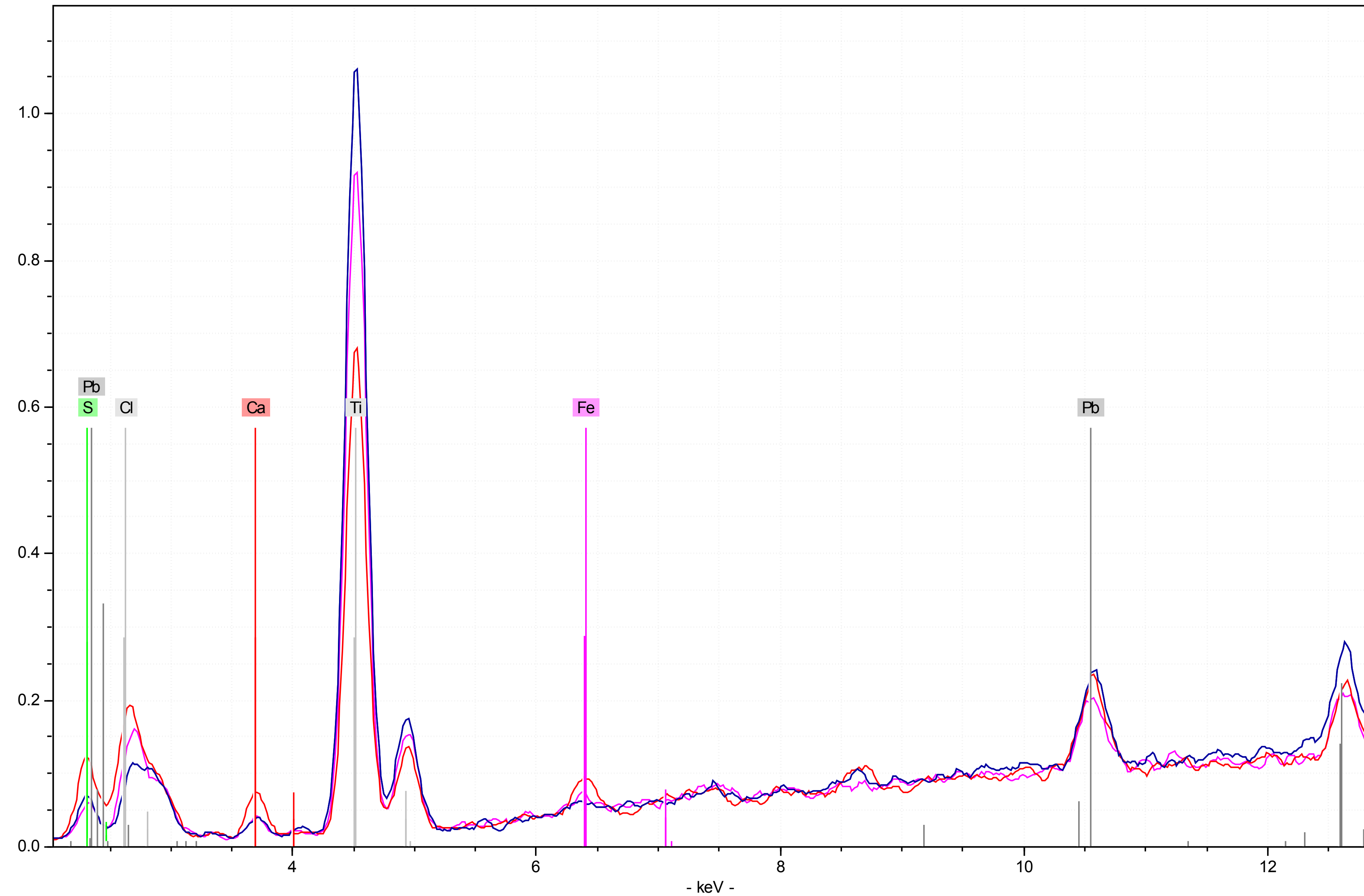


 Green 10  
 Green 13

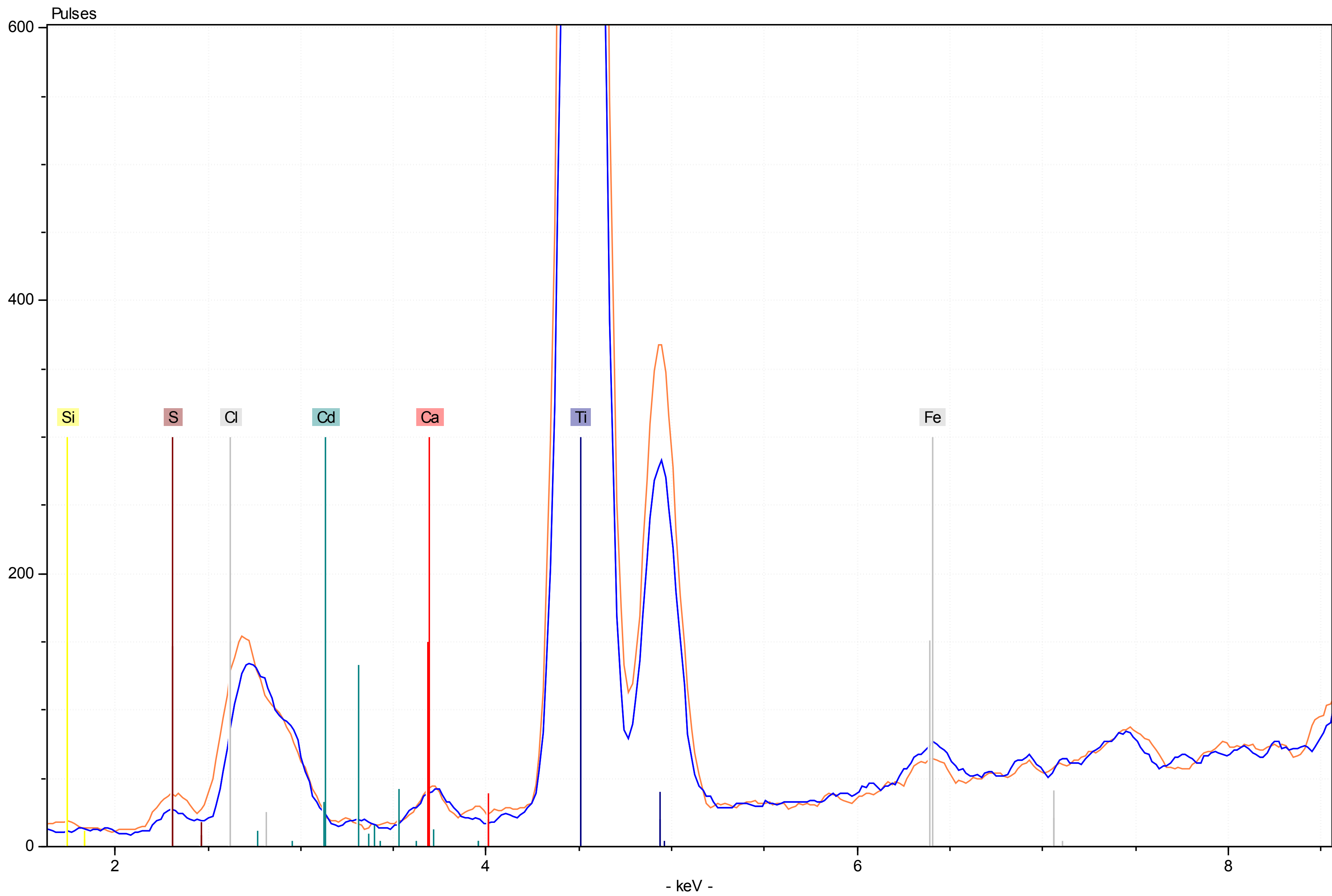
Here, we see that green 10 includes a little chrome green, while the red is likely from an organic dye based on the absence of any diagnostic metals.

x 1E3 Pulses

- Red 6
- Pink 11
- Purple 12



The colors here are primarily from dyes, though the red color may have some hematite. Of more concern is the chlorine and sulfur present, which may cause degradation.



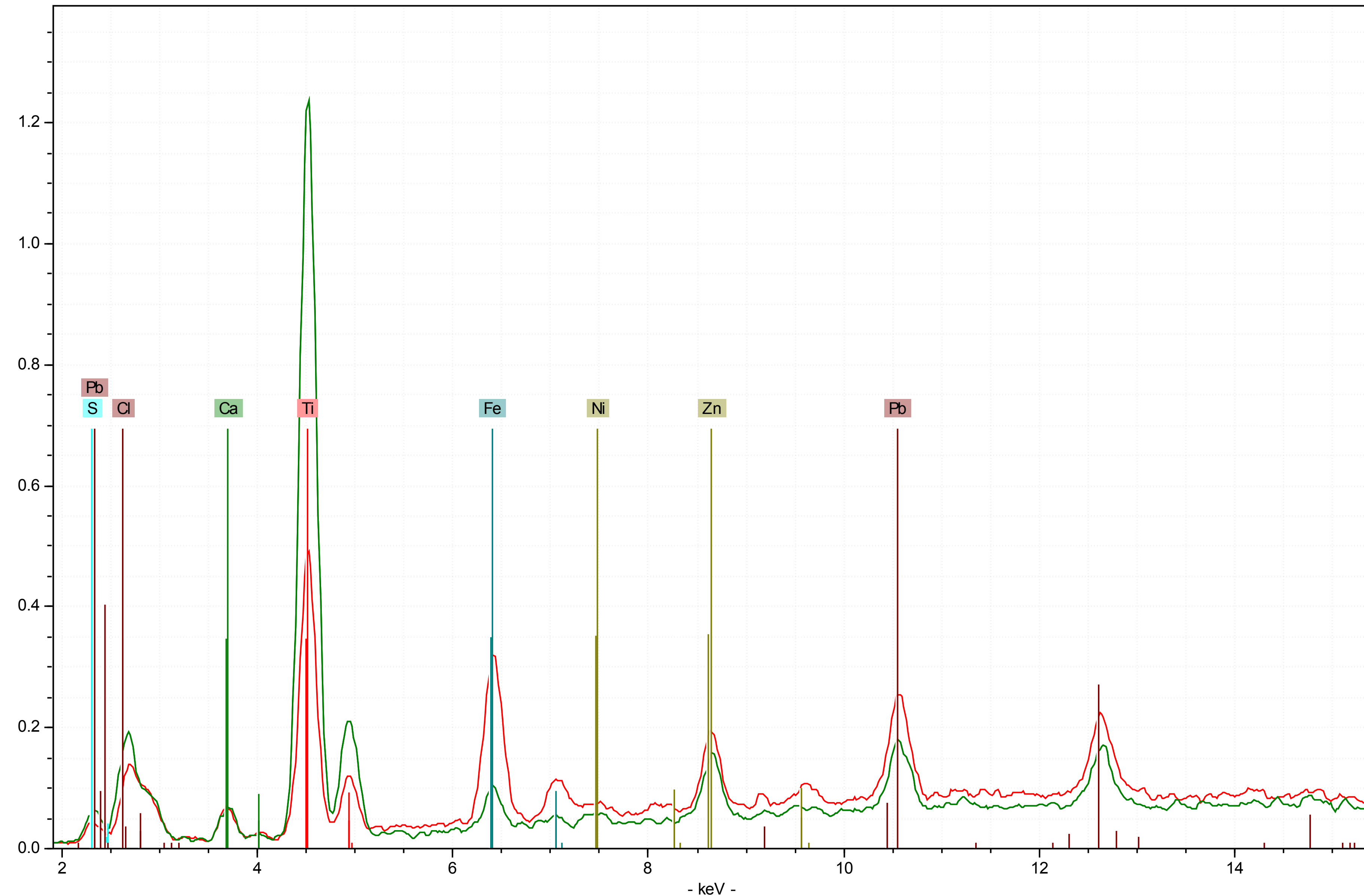
Orange 2

White 3

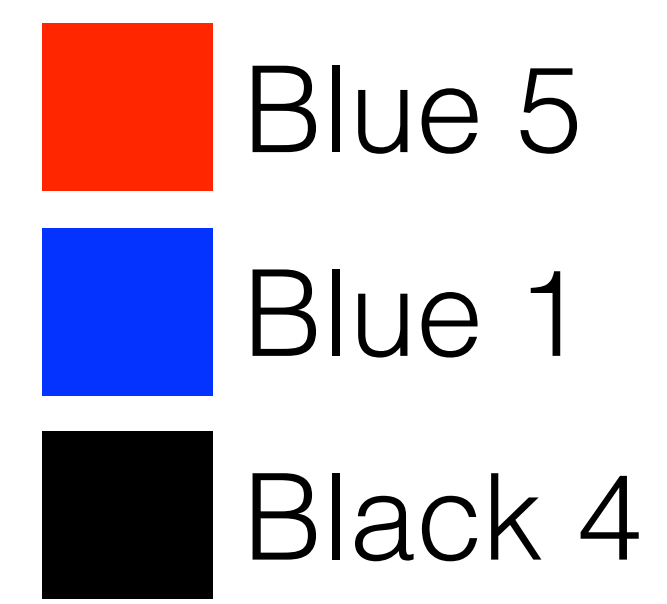
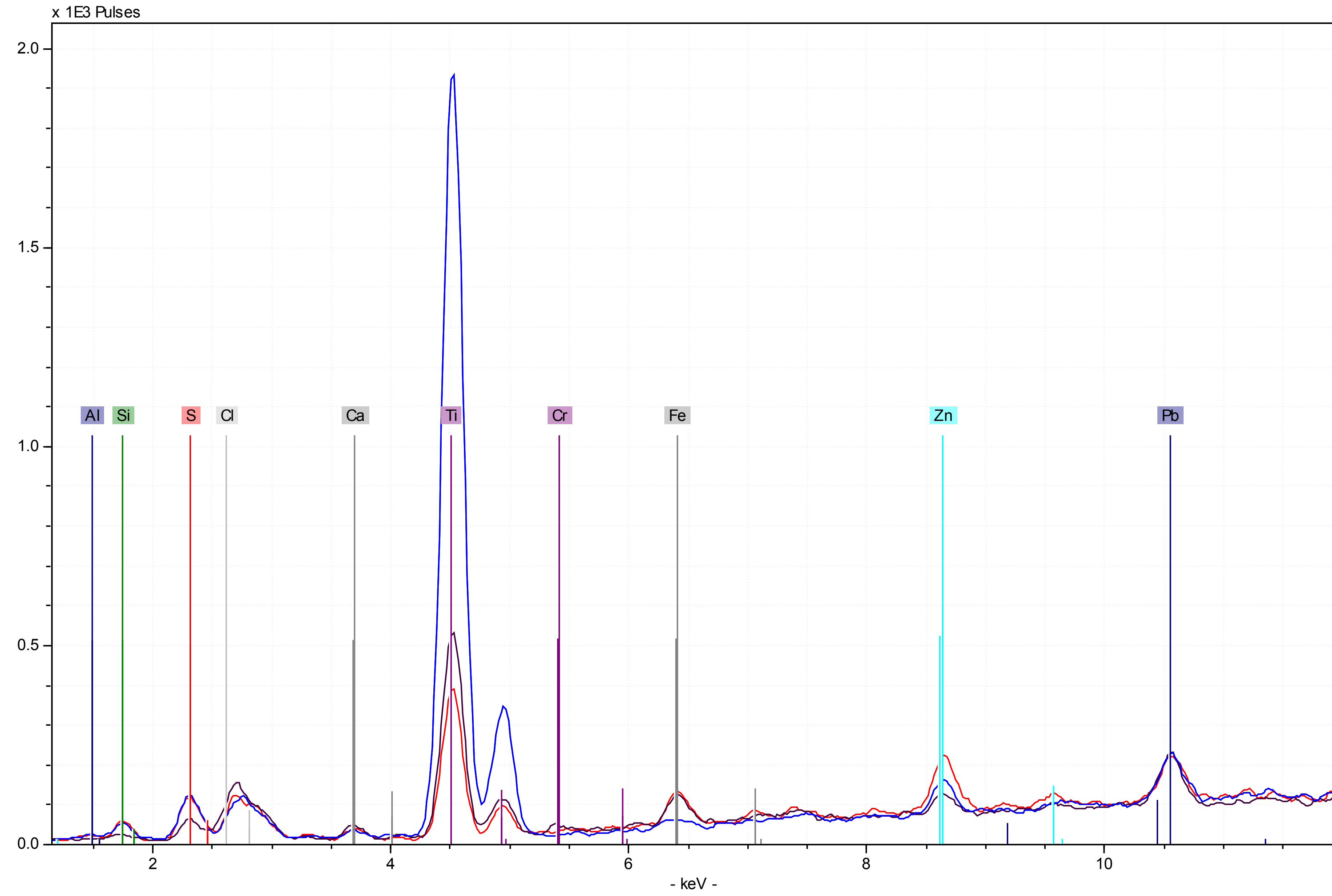
The orange color has chlorine, and even more titanium than the white color.

x 1E3 Pulses

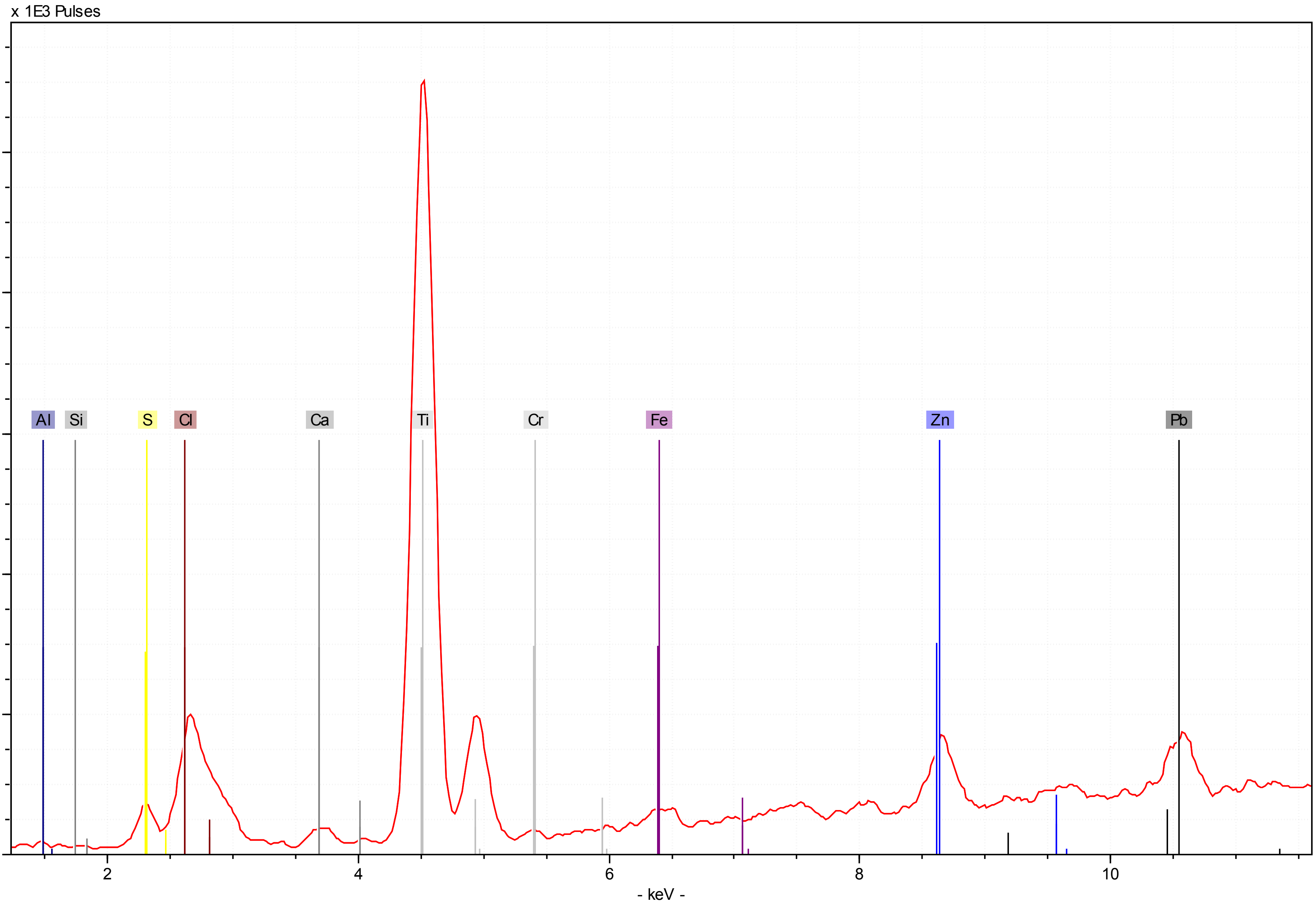
Protrusion 8  
Protrusion 9



The difference in elemental composition of the two black protrusions measured are quite different, with one having lots of iron and the latter having more titanium. This suggests protrusions are made from different materials.



The blue colors have high silicon and sulfur, this suggests that ultramarine may be present. The black does not have a diagnostic metal present.



 Crack 7

The crack has chlorine and sulfur present, possibly contributing to the structural weakness.



